



ROSS Module Summary

Request Status

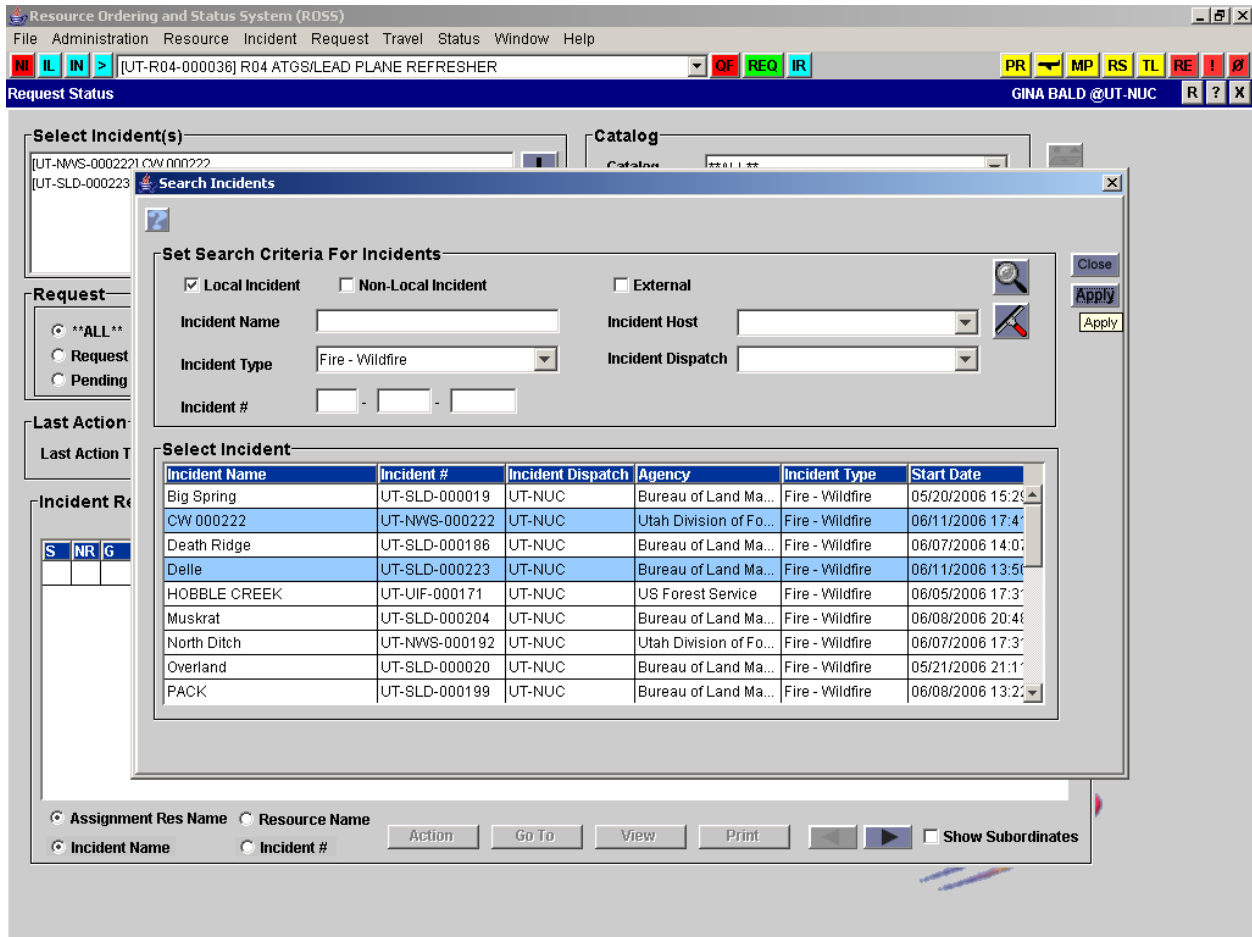


Figure 1. Filter to select an Incident(s) for which to view Request Status

Description

The Request Status module is used to filter and view the current status of selected incident requests. It can be used to determine the status of an individual request or to provide information on groups of requests for briefings or shift changes. For example, on a given incident a Dispatcher can quickly display all pending requests for crews, all crews at the incident, and all crews with a tentative release schedule.

The Request Status screen may be accessed from the menu bar Request, Request Status or Status, Request. It may also be accessed via a **RS** hot button. Various filters may be applied to refine the search for the desired incident(s) (fig. 1). These include local or non-local incidents. A dispatch center may view the status of requests on a non-local incident if the center was in the ordering chain for the request. Other filters include incident name, type, number, host, and dispatch. Once an incident is selected, ROSS displays the Request Status screen (fig. 2).



ROSS Module Summary

Request Status

Requests may be filtered by catalog, category or requested item. The default is 'All.'

Select Incident(s)

- [G4-A11-000001] Ashtabula
- [G4-A11-000001] Buladean
- [G4-A11-000003] PREPO

Catalog

Catalog: **ALL**

Category: **ALL**

Catalog Item: **ALL**

Request

ALL

Request # Filled

Pending Completed

Last Action

Last Action Taken By: **ALL** Action: **ALL**

Incident Requests

S	NR	G	QTY	R/A	Incident Name	Req #	Resource Requested	Resource Assigned	Need Date/Time	Resource Status
			1/1		Ashtabula	A-1	Airtanker, Type 1	Air Tank T1 GV4A1 1 (A...	02/20/2006 16:11 MST	At Incident
			1		Ashtabula	A-2	Airtanker, Type 1		02/20/2006 16:11 MST	
		*	1/1		Ashtabula	E-1	Engine, Type 3	Engine T3 GV4A1 1	02/19/2006 06:00 EST	At Incident
			1/1		Buladean	A-1	Airtanker, Type 1	Air Tank T1 EXU GV4A...	02/20/2006 16:11 MST	Mob-In-Route
			1/1		Buladean	C-1	Crew, Type 1 or 2 IA		02/20/2006 16:11 MST	
			1/1		Buladean	C-2	Crew, Type 1 or 2 IA		02/20/2006 16:11 MST	
			1/1		Buladean	C-3	Crew, Type 1 or 2 IA		02/20/2006 16:11 MST	
			1		Buladean	C-4	Crew, Type 1 or 2 IA		02/20/2006 16:11 MST	
			1		Buladean	C-5	Crew, Type 1 or 2 IA		02/20/2006 16:11 MST	
			WC 1		Buladean	C-6	Crew, Type 2		02/20/2006 16:11 MST	

Request Count 22

Assignment Res Name Resource Name

Incident Name Incident #

Action Go To View Print Show Subordinates

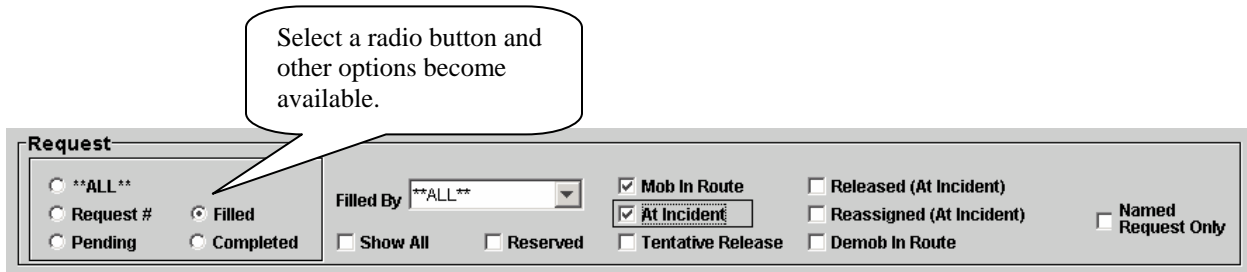
Figure 2. Request Status screen



ROSS Module Summary

Request Status

Radio buttons are used to display all requests, a specific request number or requests that are pending, filled or completed (fig 3). Additional fields, checkboxes, and/or dropdown options become available based on the selected radio button.



ROSS displays all requests that meet the filter criteria and allows the Dispatcher to take action on requests, view information about them, or print the Resource Order.

The 'Last Action' panel allows users to filter by the dispatch center that performed the most recent specified action (e.g., all requests where the last action by the GACC was UTF). The default is 'All' units and 'All' actions.

The Request Status module is related to the Tactical Aviation, Incident, New Request, Pending Request, Quick Fill, Resource Status, Incident Resources, Travel, and Travel Plan modules.

Data Information:

Data Element	Data Definition
Select Incident(s)	The incident(s) for which the user wishes to view requests. Filters for local, non-local, name, type, number, host, and host dispatch. Plus and minus buttons allows the current incident list to be updated.
Select Filter for Catalog	Requests may be filtered by catalog, category or requested item. The default is 'All.'
Request	Radio buttons are used to display all requests, a specific request number or requests that are pending, filled or completed (fig 3). Additional fields, checkboxes, and/or dropdown options become available based on the selected radio button.



ROSS Module Summary

Request Status

Data Element	Data Definition
Action <i>button</i>	Allows users to select a request and either Create Support Request, Edit Assignment, Edit Request +, View/Add Documentation, Cancel UTF Request +, or Restore Request +.
Go To <i>button</i>	Allows users to select a request and go directly to the pertinent Incident screen or the same request on the Pending Request, Incident Resources, Travel, Resource Status or Release Resources (Non Local) screens.
View <i>button</i>	Allows users to select a resource and view the Incident, Request or Requesting Unit.
Show Subordinate Requests <i>checkbox</i>	Checkbox used to display subordinate requests for a selected resource that has a configuration (e.g., CRWB, FFT1s and FFT2s for a crew). Action may then be taken on one or more subordinate requests without affecting the parent or other subordinates (e.g., release one crewmember).