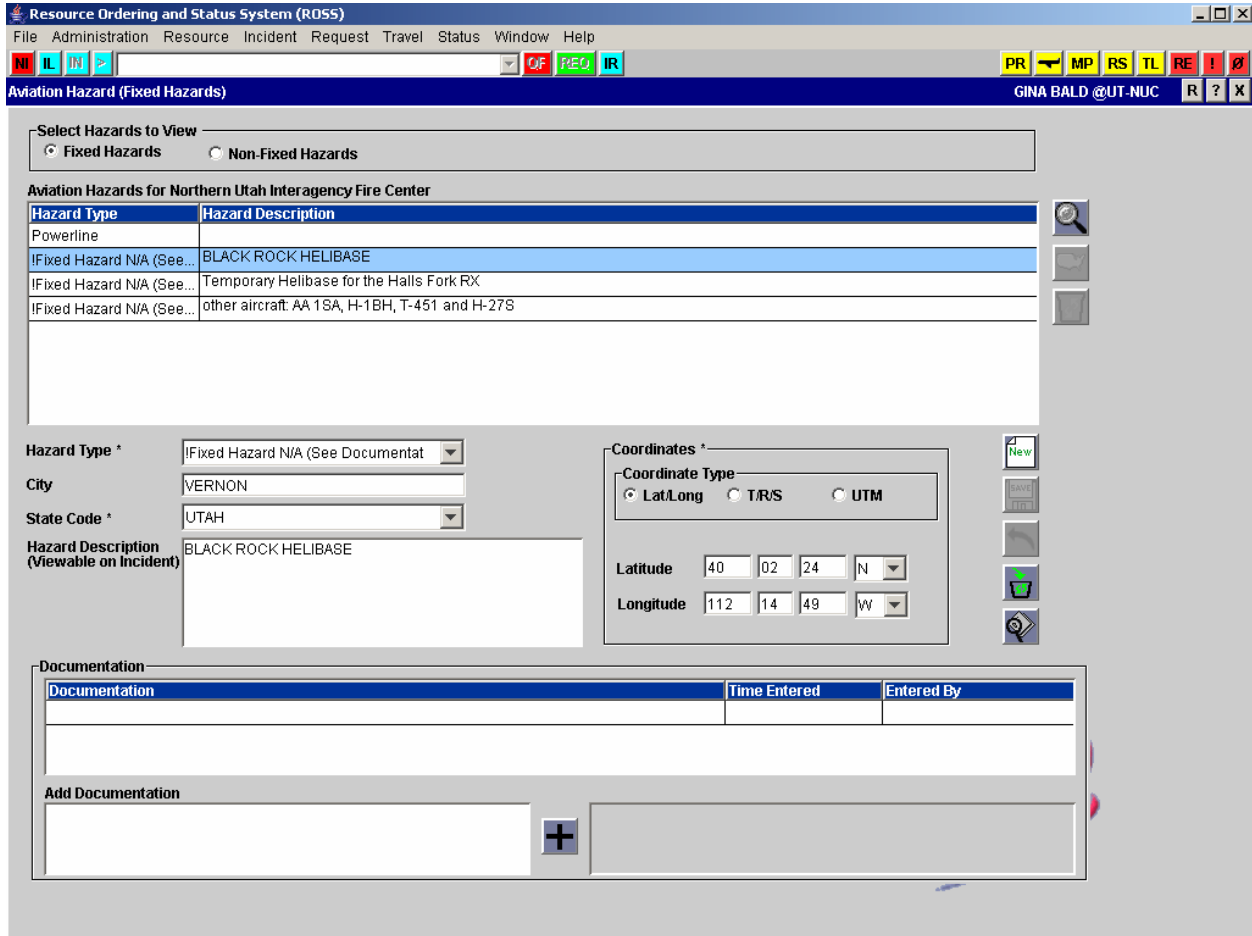




# ROSS Module Summary

## Aviation Hazard



### Description:

The Aviation Hazard module is used by Data Managers at each dispatch center to create a list of the fixed and non-fixed aviation hazards that pose risks to aviation safety in the particular vicinity. Dispatchers create incident-related aviation hazards that also become part of the module.

Aviation hazards are subdivided into fixed threats (e.g., smoke stacks, towers) and non-fixed or temporary hazards (e.g., smoke, congested airspace). The National Data Steward maintains the list of fixed hazard types. The Data Manager at each dispatch center creates and maintains a local list of non-fixed hazard types. In addition to type, hazard attributes include the coordinates, city, state, and description.



# ROSS Module Summary

---

## Aviation Hazard

Aviation hazards within 10 miles of a ROSS incident are automatically associated with the incident and displayed on the Aviation Hazards tab of the Incident screen. Dispatchers may create new aviation hazard records from the Incident screen. ROSS adds these to the Aviation Hazard module list. When the ROSS map function is implemented, aviation hazard locations may be graphically displayed. Military routes and special airspace information will be periodically imported from NIMA.

The Aviation Hazard module is related to the Organization, Location, and Incident modules.

### Data Information:

Data Element	Data Definition
Hazard Type	Features or conditions that pose a threat or risk to aircraft operations in the vicinity. <i>Required field.</i>
Fixed hazards	Permanent features such as towers, cables, smoke stacks, etc.
Non-fixed hazards	Temporary hazards such as heavy smoke, congested airspace, air show, etc.
City	Name of the city where the hazard is located
State	Two-letter state code where the hazard is located. <i>Required field.</i>
Coordinates	The location information for a hazard. Regardless of the coordinate format entered, the data is automatically converted to, and may be displayed in, the other formats. <i>Required field.</i>
Coordinate Type	Latitude/Longitude, PLSS, or UTM coordinates.
Hazard Description	Additional information that further explains the nature or location of the hazard.
Documentation	Pertinent information or notes about an Aviation Hazard that the user wishes to capture. ROSS automatically documents many user actions.